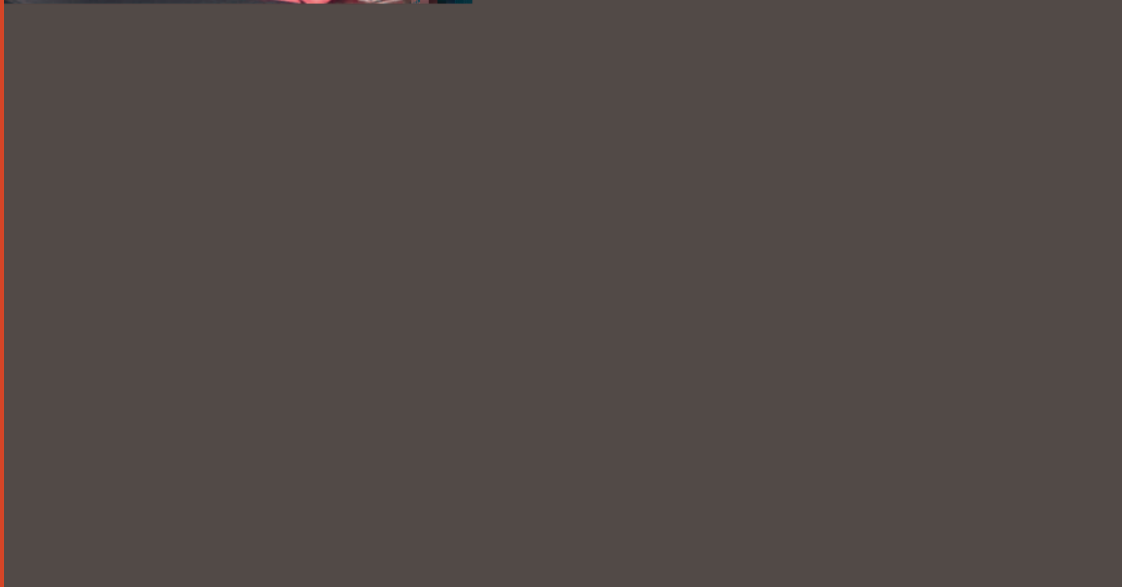


ortoalresa

Centrifuges and laboratory products

BIOCEN 22 / BIOCEN 22R V.2

BIOCEN 22



IVD CE

Very often the microcentrifuge user must consider the interactions between the tube and the sample, but ... What about the interaction between the tube and the centrifuge? The **Biocen 22** is designed to prevent contamination by interaction with the centrifuge and temperature increasing by:

- Chamber stainless steel centrifuge easily sterilized.
- Rotors with tight lids.
- Ventilation system that helps reduce the temperature.

Designed for small volume, allows 24 microtubes Centrifuge 2.2 ml, 32 ml of 0.2 up to 24 tubes of 1.5 x 75 mm, up to 15,000 rpm / 21,885 x g.

Reduce spin time by controlling the different stages, allowing braking according to the type of sample.

Optimizing the samples separation on a safe environment.

Use friendliness

- LCD screen shown RPM/RCF and time.
- Intuitive handling through start, stops, short spin and lid keys.
- Rotor list on memory.
- Timer count up/down, from 0 or at "set RPM/RCF" for test reproducibility.
- Short spin key with speed adjustable.
- Acceleration and braking selectable by operator
- Automatic open lid.
- Last values remain on memory.
- Lid latch lock.
- Microprocessor controlled.
- Option: free or locked adjustment of RPM/RCF along the run.

Features

- Induction motor maintenance free
- Capacity max : 24 x 2,2, ml.
- Speed, up to 21.885 x g/15.000 RPM.
- Quiet: noise level < 60 dB.

Safety

- Lid locking and holding as well as lid dropping protection.
- Imbalance switch off.
- Manual overriding.
- Chamber of centrifugation in stainless Steel.

- Viewing and calibration port in the lid.
- Several messages keep the operator informed about the device situation.
- Guard ring between the chamber of centrifugation and the housing.
- Forced ventilation which reduces the temperature increase.

EC Directives: 98/79/EC, 2006/95/EC, 2004/108/EC; 2002/95/EC, 2002/96/EC, 2003/108/EC.

Standards: 61010-1:2002, 61010-2-020:2006,61326-1:2006

Versions

Ref	Dimensions (mm) (w x d x h)			Net weight (Kg)	Voltage (V)	Frequency (Hz)	Power (W)
	276	390	272				
CE 146	276	390	272	17	220-240	50-60	180
CE 147	276	390	272	17	110-120	50-60	180

Accessories

		RT 227		RT 228 (1)		RT 229	
		ANGLE FIXED 45 °		HORIZONTAL		ANGLE FIXED 45 °	
Max. capacity		24 of 1,5x2 ml.		24 of 1,5x75 mm.		32 of 0,2 ml	
R.P.M.		15.000		15.000		15.000	
Radius mm		82		87		55	
R.C.F.		20.627		21.885		13.835	
Braking time (s)		15		15		15	
		ADAPTERS		ADAPTERS		ADAPTERS	
TUBES CAPACITY	Dim (mm)	TUBES	REF.	TUBES	REF.	TUBES	REF.
1,5x75 mm. capillaries	1,5x75	-	-	24	-	-	-
microtubes 1,5-2 ml.	11x39	24	-	-	-	-	-
microtubes 0,5-0,6 ml.	8x30	24	RE 305	-	-	-	-
microtubos 0,2-0,4 ml.	6x45	24	RE 304	-	-	32 de 0,2	-

(1) Includes microhaematocrit reader card

BIOCEN 22R



The **Biocen 22 R** can reach up to 30.034 x g , becoming the necessary tool for most demanding labs.

Usually microcentrifuges work with samples sensitive, valuables, or dangerous (toxic, radioactive, infectious). Orto Alresa has built the Biocen 22 R with several advantages which allow a safe analysis, without interaction of centrifuge, as:

- Cooling system which maintains the sample temperature at 4°C at max speed, regardless of the rotor.
- Chamber of centrifugation in stainless steel, allowing an easy disinfection on samples leakages, avoiding contamination form the centrifuge.
- Rotors with hermetic lids.
- Accessories sterilizables.

Use friendlinessly

- LCD screen shown RPM/RCF ,time, temperature and braking.
- Intuitive handling through start, stop, short spin and lid keys.
- Rotor list on memory.
- Timer count up/down, from 0 or at “set RPM/RCF” for test reproducibility.
- Short spin key with speed adjustable.
- Automatic rotor recognition.
- Acceleration and braking selectable by operator.
- 15 memories and pre-cooling program.
- Automatic open lid.
- Lid latch lock.
- Microprocessor controlled.
- Option: free or locked adjustment of RPM/RCF along the run.

Features

- Induction motor maintenance free
- Capacity Max .8 x 15 ml.
- Speed, up to 30.034 x g/18.100 RPM.
- Quiet: noise level < 60 dB.

Safety

- Lid locking and holding as well as lid dropping protection.
- Imbalance switch off.
- Manual overriding.
- Chamber of centrifugation in stainless Steel.
- Viewing and calibration port in the lid.
- Several messages keep the operator informed about the device situation.
- Guard ring between the chamber of centrifugation and the housing.

Cooling

- Precooling program with rotor spinning and temperature selectable by operator.
- 4 C at Max speed as higher.
- Temperature range -20 °C a 40 °C.
- Temperature sensor inside the chamber, gas R 404A HFC.

EC Directives: 98/79/EC, 2006/95/EC, 2004/108/EC; 2002/95/EC, 2002/96/EC, 2003/108/EC.




Regulation: 1005/2009 & 842/2006.

Standards: 61010-1:2002, 61010-2-020:2006,61326-1:2006

Versions

Ref	Dimensions (mm) (w x d x h)			Net weight (Kg)	Voltage (V)	Frecuency (Hz)	Power (W)
CE 148	276	640	272	34	220-240	50-60	540
CE 149	276	640	272	34	110-120	50-60	540

Accesories

		RT 222		RT 223		RT 224	
							
ROTOR		ANGLE FIXED 45 °		ANGLE FIXED 30 °		ANGLE FIXED 45 °	
Capacity		24 de 1,5x2 ml.		8 X 15 ml. conical		32 de 0,2 ml	
R.P.M.		18.100		8.000		18.100	
Radius mm		82		91		55	
R.C.F.		30.034		6.511		20.145	
Min.temp.max speed (°C)		0		-2		0	
		ADAPTERS		ADAPTERS		ADAPTERS	
TUBES CAPACITY	Dim (mm)	TUBES	REF.	TUBES	REF.	TUBES	REF.
15 ml	16 x 100	-	-	8	-	-	-
10 ml	13 x 100	-	-	8	RE 371	-	-
5 ml blood test	13 x 82	-	-	8	RE 377	-	-
1,57x75 mm. capillarie	1,5 x 75	-	-	-	-	-	-
microtubes 1,5 - 2 m	11 x 39	24	-	-	-	-	-
microtubes 0,5 -0,6 ml	8 x 30	24	RE 305	-	-	-	-
microtubes 0,2 - 0,4 ml	6 x 45	24	RE 304	-	-	32 of 0,2	-